



**KYUL
ENGINEERING
Company Ltd**



COMPANY PROFILE

“Our commitment,
Your satisfaction”

Location:
Kenyatta Market, Kirkwood House Suite 2S

Address:
P.O. BOX 7770 - 00100, Nairobi,

Tel:
02052228461, 0721900050, 0713900050



KYUL ENGINEERING COMPANY LTD

BUILD THE TRUST
BUILD THE FUTUTRE



We certify that, to the best of our knowledge, the information presented in this Profile is accurate. In the event of any changes in the firm's position, such as annual accounts, management structure etc.

We undertake to issue details of these as soon as they are available.



KYUL ENGINEERING COMPANY LTD

About Us

Kyul Engineering Limited is a Private Limited Company registered in accordance with the Companies Act Cap 486, Laws of Kenya. The Head Office is situated at Kenyatta Market, Kirkwood House, Suite 2s in Nairobi. This group is involved in specialized infrastructure development countrywide and sales of construction materials.

Kyul Engineering Limited was established in the year 2011 as constructors with an aim to serve the nation professionally in the fields of Electrical & Civil Engineering. Over the years we have completed numerous commercial & industrial projects of national importance.

Since 2011 Kyul continues to strive for providing reliable, efficient & cost effective projects to many local and multinational companies on turnkey basis.



We are committed to follow engineering code of practice/standards set by National Construction Authority (NCA) hence achieve maximum client's satisfaction. Right from the inception of the Industry / building construction activity numerous intricate starts, this goes along till the completion of project. For the smooth sailing of whole work, the client as well as consultant is always found concerned about the renders of whole job and is rarely found satisfied with speed / quality of work and very seldom able to have a team which maintains the quality and speed of work.

Kyul proudly acclaims to provide the best services in Electrical / Civil engineering and can undertake the whole job. Please find our line of product and list of references that might speak of our quality and experience. Our commitment with client is also backed up by extensive technical support, after sales service and comprehensive level of stock, for immediate response to customer's requirements.

If you have any queries for the pre-qualification of our company, please do not hesitate to contact us. We will be really glad to assist you.

Thanking and assuring you of our best services and Co-operation.



KYUL ENGINEERING COMPANY LTD

1 MISSION

Our Vision is to grow to the level of a reputable, reliable & dependable construction and supplies company in the region. We Endeavour to give our clients the goods and services they require at the highest standard possible and within the precincts of professional specifications.

2 VISION

To provide civil Engineering & Road works, building works Services including related activities and services using up-to-date technological systems and methods to the satisfaction of the clients with the objective of maintaining professionalism

BUSINESS ETHICS

Honesty - Dedication

3 POLICY STATEMENT

- The company's is hinged on 3-core pillars of: Safety, Quality and Dependability.
- The safety of our employees and the public are fundamental and therefore accident prevention is considered of primary importance in the operation and administrative departments.
- It is our policy that a partner is involved directly with every project that the company is commissioning, depending on the complexity and size of the project.
- Quality is the hallmark of our company. It has been our corporate objective for the past year, it continues to be our corporate objective today and for the future.





KYUL ENGINEERING COMPANY LTD

Our values and principles

Our business strategy is to provide superior engineering offerings that rely on innovation as a core differentiator. We take a holistic approach to the critical elements that customers require. The elements of our business strategy include:

Innovation:-we rely on-going innovation in engineering planning and design, project implementation, project management and support services to ensure continuing engineering leadership, which our customers experience in the form of greater cost efficiencies.

Solutions-based selling model:-We use a solution-based selling model that emphasize on tailor-making solutions to address unique customer's business requirements and needs.

The management of Kyul Engineering Ltd believes that customer (client) satisfaction is an important key to the success of our business. This message is cascaded throughout the company.

We have developed a comprehensive approach to customer care and to minimizing defects on all our schemes. Our objective is to achieve customer satisfaction and repeat business by providing electrical solutions that conform to agreed requirements.

Kyul Engineering Ltd has built its foundations on relationships with partners, associations, clients, contractors, and employees. Our reputation is based upon recommendations and this has helped set us apart from our competitors.

The code of conduct at Kyul Engineering Ltd stems from traditional values within our workforce. Trust, honesty and understanding encompass many of our beliefs and for

- Be polite, friendly and courteous
- Maintain a high standof professionalism
- Carry cooperative and flexible attitude
- Acknowledge concerns
- Be informative
- Listen to feedback





KYUL ENGINEERING COMPANY LTD

BUSINESS ACTIVITIES

1

CIVIL ENGINEERING

- Construction of residential and industrial houses using locally available human and material resources.
- Routine maintenance of housing facilities, general repair and improvement of old structures to meet new architectural needs.
- Portioning and equipping new structures to meet the ever raising demand of offices.



We offers a wide range of civil and structural engineering construction ranging from steel structures erections, reinforced concrete structures and road construction in gravel, paving blocks, concrete, bitumen roads and associated drainage structures.



KYUL ENGINEERING COMPANY LTD

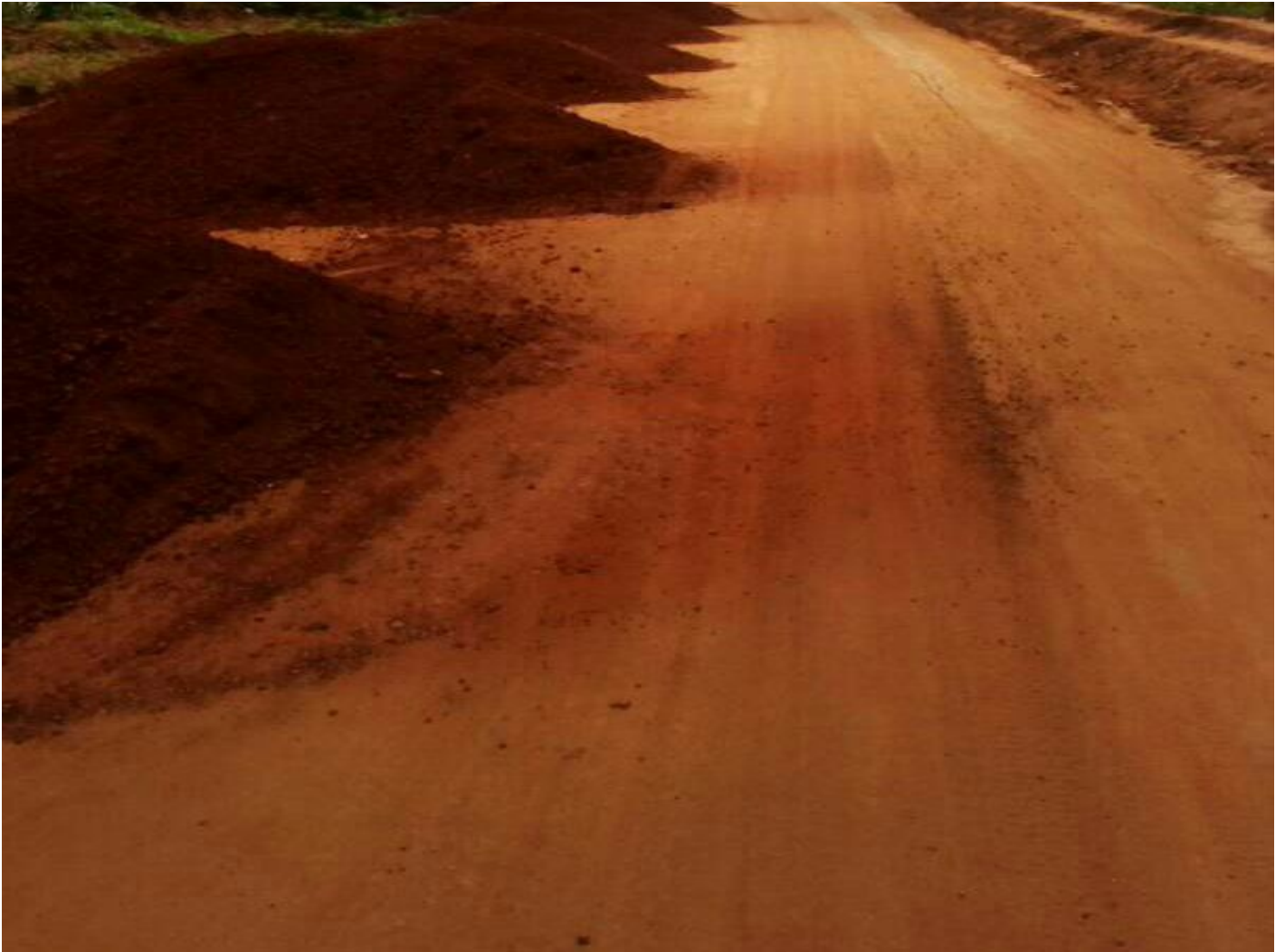
EARTHWORKS KILIFI





KYUL ENGINEERING COMPANY LTD

KWALE ROAD





KYUL ENGINEERING COMPANY LTD

BUSINESS ACTIVITIES

2 GENERAL BUILDING WORKS

- Construction of Commercial and Industrial Buildings.
- Construction of Steel framed Building and Industrial Plants.
- Building Restoration and Conservation
- Construction of Water retaining structures, water and sewerage rehabilitation and reticulation, Reservoirs, Aqueducts and Water Treatment
- Plants & Pipe Laying Works.
- Construction of road in statement, Pavements, Bus Bays, Open Car Parks,&Footways.



we have highly trained and specialized team who have years of experience in the field of general building contracting and construction management. Our objective is to deliver projects with highest level of quality and customer's satisfaction.

We offer full building contracting services for Constructions such as Villas, Warehouses, Mosques, Service Blocks, External Majlis, Villa's Extension and boundary walls ...etc. We have many completed references in the same field.



KYUL ENGINEERING COMPANY LTD

ELDORET RESIDENTIAL PROJECT





KYUL ENGINEERING COMPANY LTD

ELDORET RESIDENTIAL PROJECT





KYUL ENGINEERING COMPANY LTD

PROJECT





KYUL ENGINEERING COMPANY LTD

MTWAPA APARTMENTS RENDERS





KYUL ENGINEERING COMPANY LTD

FREEDOM APARTMENTS MTWAPA





KYUL ENGINEERING COMPANY LTD

FREEDOM APARTMENTS MTWAPA





KYUL ENGINEERING COMPANY LTD

BUSINESS ACTIVITIES



MECHANICAL AND ELECTRICAL WORKS

- Electrical installation in buildings and other related works.
- Undertake construction of sewerage projects and facilities, fencing with concrete posts and masonry fencings.
- Supply of building materials, plumbing and electrical fitting and accessories.
- Kyul Engineering has an engineer and technicians that are qualified and experienced in all aspects of engineering, design and solutions deployment.
- Engineers are all certified and experienced in all aspects of project deployment from conceptualization to implementation and commissioning and this guarantees good, quality service for all customers.
- Kyul Engineering has over the years demonstrated its capability to design and implement its projects.
- Prospective customers can be assured that this is not maiden ground for Kyul Engineering who has in-house skills to implement and support various on-site and workshop based projects.
- Proven track record–Kyul Engineering has worked with the corporate fraternity and the Public Sector in deploying solutions and services of all types and sizes and is known for its quality workmanship and fast turn-around times.
- Kyul Engineering does not just end at implementation but also offers sales and support to guarantee customers continuity of service offer
- Through its expertise, Kyul Engineering is well-positioned to provide thought leadership to their current and prospective customers and to ensure conformity and adaptability to new developments in the engineering world.



KYUL ENGINEERING COMPANY LTD

BUSINESS ACTIVITIES

Installation and Preventive Maintenance of Electrical and Mechanical systems and infrastructure.

- Comprehensive Maintenance
- Preventative Maintenance

Electrical and Mechanical Installation and Maintenance Services

- Installation of High Voltage and low voltage and transmission lines.
- Installation of transformers .substations and switch
- General electrical installation both for industrial and domestic clients
- Installation and servicing of back systems i.e. UPSs Inverters and standby generators
- Installation and maintenance on air-conditioning machines.

Construction and mechanical works

- General construction of buildings , roads, HVAC, plumbing and drainage works.





KYUL ENGINEERING COMPANY LTD

QUALITY AND SAFETY, OUR PRIMARY CONCERN

SAFETY

Our employees are our assets, thus safety is our priority. The company is fully registered with the authorities and our employees are continually trained in safety subjects relevant to the construction industry. All legislation are adhered to and our people have been trained in Supervisor, First Aid, Basic Fire, Legal Liabilities, Risk assessment, Incident investigation, scaffold erector, scaffold inspector, working at heights, to name but a few.

APPROACH

We pride ourselves in our specialized ability to deliver and support the identified demands of any business or company.

VALUE

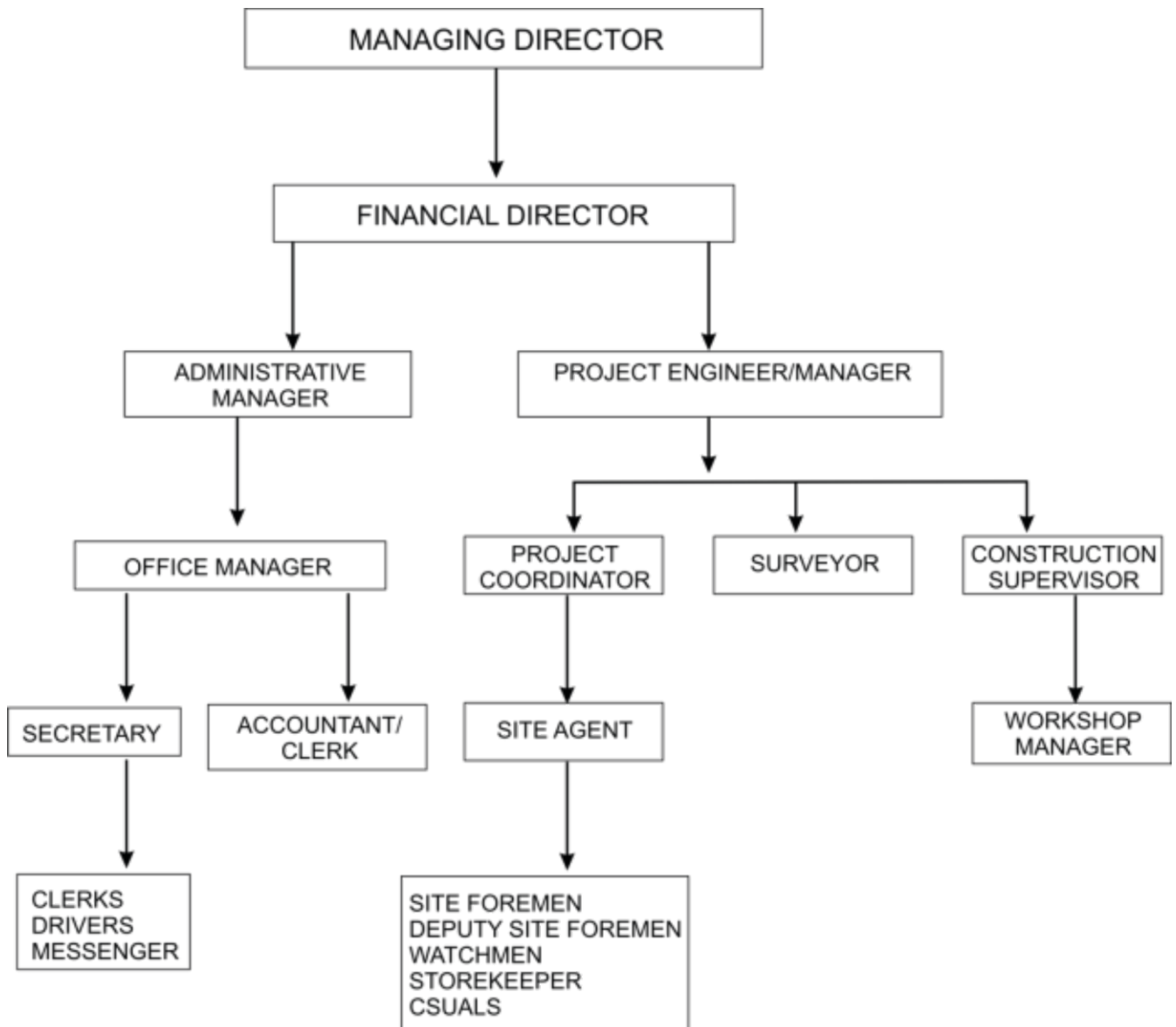
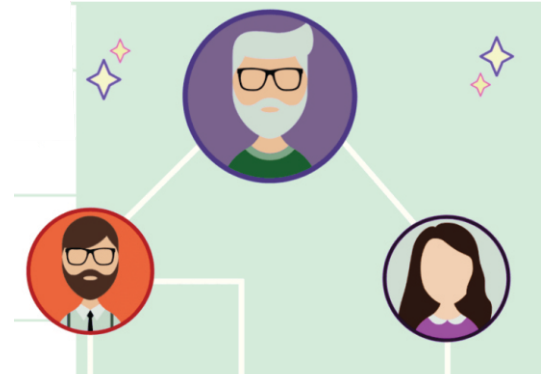
The company committed to provide the good customer service. Compliance with rules and regulations of the country.

In line with ethical business practice Obera Investments Ltd ensures to delivery all the logistics applying over business ethics such as efficiency, professionalism and time management.



KYUL ENGINEERING COMPANY LTD

Organization Chart Structures





KYUL ENGINEERING COMPANY LTD

CLIENT LIST

At Kyul Engineering Ltd, we are constantly working to improve our quality of service to our customers and want to hear feedback from our stakeholders. In order to maintain our continuing high standards we issue a customer satisfaction report on all completed projects that our customers may complete and return. This way we constantly monitor the quality of workmanship through to the quality of management.

We have recently implemented a web-based survey solution that enables clients to easily submit their insights, performance score and feedback.



Kakamega County Government



Opening up Rural Kenya



KYUL ENGINEERING COMPANY LTD

LOCATION: KENYATTA MARKET, KIRKWOOD HOUSE SUITE 2S
ADDRESS: P.O. BOX 7770 - 00100, NAIROBI,
TEL: 02052228461, 0721900050, 0713900050



STATUTORY DOCUMENTS

